

DUO

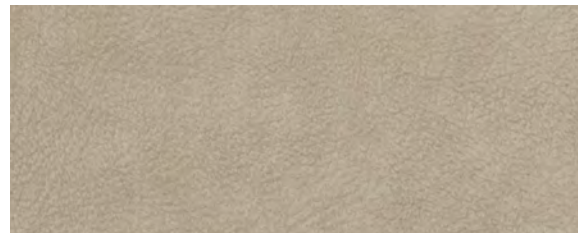
PERFECTA

YOUR PERFECT CHOICE IN FURNITURE



DS91 white

frontside of the backrest DS91,
backside of the backrest DL92,
upperside of the seat DS91,
if seat with edge : DL92



DL92 white

DUO90



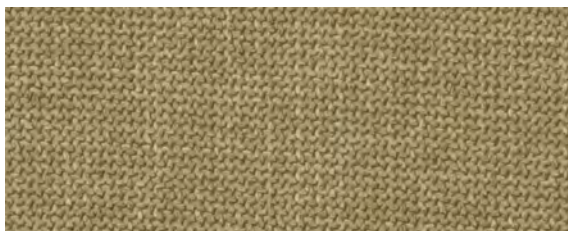
DS81 nature

frontside of the backrest DS81,
backside of the backrest DL82,
upperside of the seat DS81,
if seat with edge : DL82



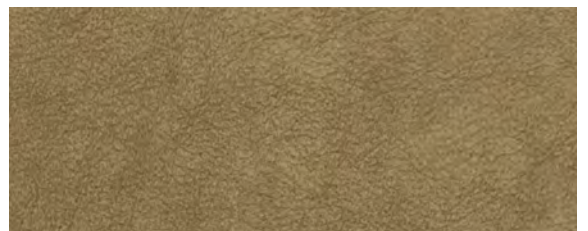
DL82 cream

DUO80



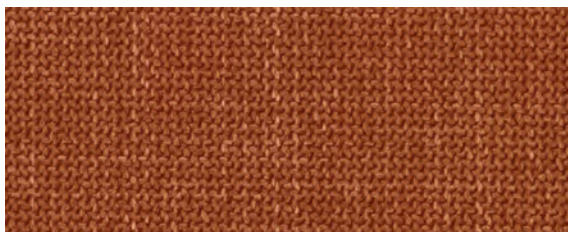
DS61 sahara

frontside of the backrest DS61,
backside of the backrest DL62,
upperside of the seat DS61,
if seat with edge : DL62



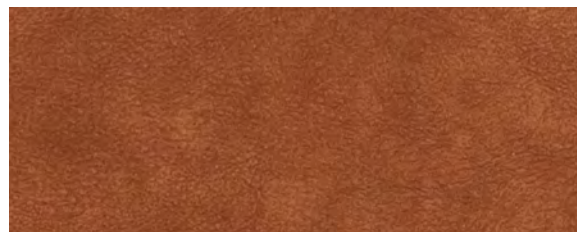
DL62 papyrus

DUO60



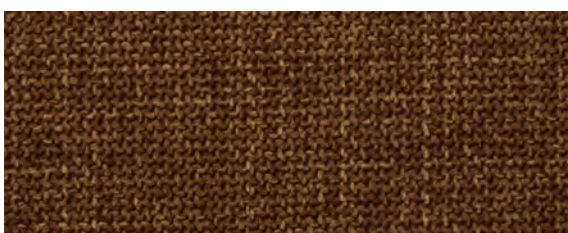
DS21 terracota

frontside of the backrest DS21,
backside of the backrest DL22,
upperside of the seat DS21,
if seat with edge : DL22



DL22 pumpkin

DUO20



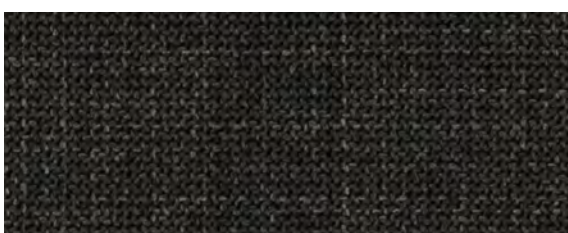
DS86 chocolate

frontside of the backrest DS86,
backside of the backrest DL87,
upperside of the seat DS86,
if seat with edge : DL87



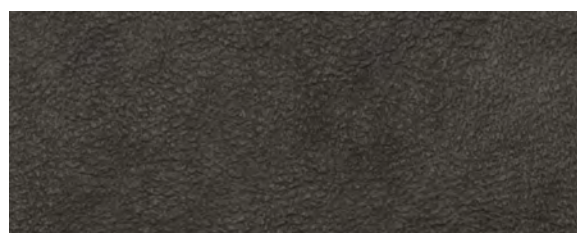
DL87 nougat

DUO85



DS01 graphite

frontside of the backrest DS01,
backside of the backrest DL02,
upperside of the seat DS01,
if seat with edge : DL02



DL02
grey







DUO00

01102024

Product profile for upholstery fabrics in living areas - according to DIN EN 14465:2006

Duo DS.. Polyester yarns are woven into this textile in a classic plain weave. The base gives the fabric a very soft feel, characterized by volume and softness.

Duo DL.. Convinces with almost all haptic and optical advantages that usually only a real leather can offer. The authentic grain structure in the microfiber fabric makes it look like leather.

	Duo DS..	Duo DL..
Usable width: Thickness: Weight m DIN EN 12127: Surface EU 1007 2011: Base EU 1007 2011:	140 cm +/- 2 cm 1.4 mm +/- 2 % 566 g +/- 5 % 100% polyester 100% polyester	142 cm +/- 2 cm 1.3 mm +/- 2 % 738 g +/- 5 % 100% polyester 85% polyester, 15% recycled leather
 Abrasion test (cycles) EN ISO 12947-1,2 (Martindale)	>38.000 (= A)	>30.000 (= A) 7.000 loss of pile
 Pilling test EN ISO 12945-2 (2.000 T)	5 (= A)	4 (= B)
 Fastness to rubbing dry EN ISO 105-X12 bright colors dark colors	4-5 (= A) 4-5 (= A)	4-5 (= A) 4-5 (= A)
 Fastness to rubbing wet EN ISO 105-X12 bright colors: dark colors:	4-5 (= A) 4-5 (= A)	3 (= B) 3 (= B)
 Fastness to light EN ISO 105-B02-2 bright colors: dark colors:	6 (= A) 6 (= A)	4 (= C) 4 (= C)
 Permissible color tolerance DIN EN 20105-A02	min. grade 4 (= passed)	min. grade 4 (= passed)

CLEANING INSTRUCTIONS : Daily care and at-home cleaners can keep your fabric looking beautiful for years. In the case of a spill, stain, or general wear and tear, follow our tips on how to clean a fabric. For cleaning you need distilled water and a ph neutral shampoo. You need a white, clean and soft cotton cloth. Use this to remove the stain in circular motions and allow the area to dry.

PRODUCT CHARACTERISTICS : Slight colour and structure deviations between the production batches are unavoidable. Pilling is unavoidable and can also be caused by the adhesion of foreign fibres. A certain amount of colour fading due to light or abrasion is inherent in the nature of a fabric. Light colours show dirt and denim abrasion faster and more clearly than dark colours. Light colours may cause colour migration in combination with dark or intensive colour tones. Dark and intense colours tend to abrasion.

DS : Thickening of threads, knots and foreign weft cannot be excluded with woven fabrics. All flat-weave fabrics roughen through use. Depending on the material, a slight stripe effect may occur. Loop pulls are to be expected when hooked with pointed objects or Velcro fasteners.

DL : Patina and shine spots created during use are characteristic of microfiber fabrics. In regularly used areas, lightening and pile loss may occur. Pile layer changes seat mirrors and slight oscillation are unavoidable.